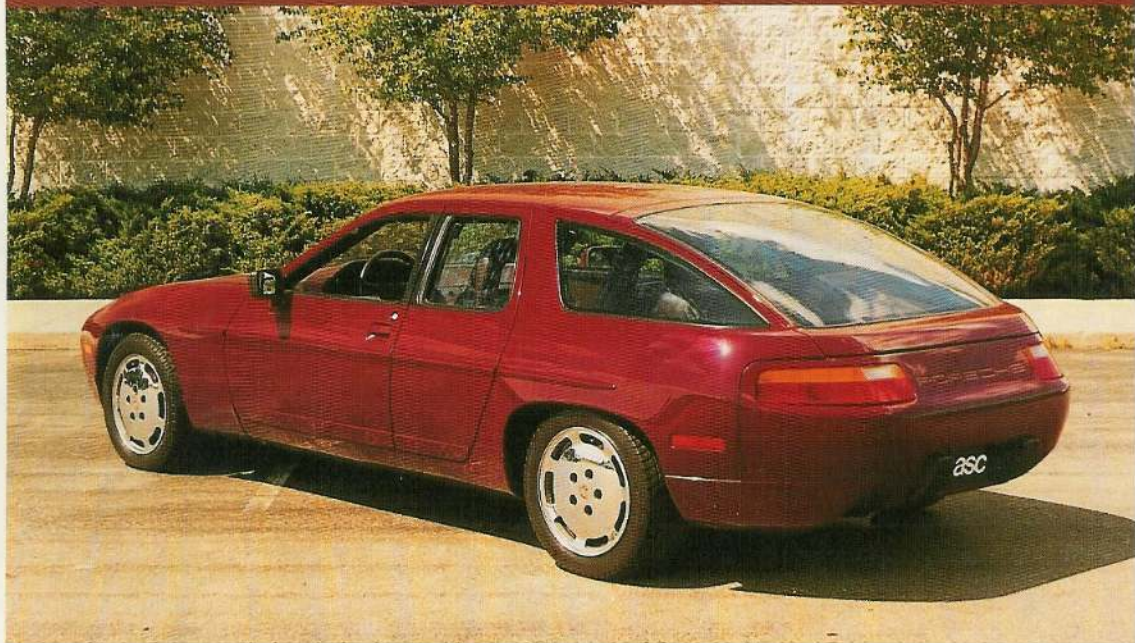


THE ASC 928

A Porsche Family Car

BY JERRY McDERMOTT



“When the time was right to create a new kind of sports car, it was Porsche that did the job. It was inevitable that when new solutions were found, Porsche would find them. And those solutions are embodied in the entirely new 928.”

This bit of hype from the 1977 sales brochure for the Porsche 928 could have been an announcement for the modified 928 created by the American Sunroof Corporation in 1989. At the time this car was built, ASC was expanding its presence in Europe and was in the midst of launching the 944 Cabriolet. With a view to expanding its relationship with Porsche, ASC took a 928 from its inventory and created this four-door model as a speculative venture.

The car is a 1987 928 that was

modified over a period of four months in 1989. To create the four doors, the car was sectioned and lengthened by 111 cm. In addition, the chassis was stiffened to accept the rear door and to reduce the stress from the increased length. The ASC 928 Project ground rules stated that the car had to be durable and not just a concept or show car. Accordingly, when semi-finished, but without an interior, the car was driven on rough roads to test its engineering.

The ASC approach is a unique solution to the problem of rear seat entrance/egress. The design is similar to the lock arrangement of household double front doors. In this design, the primary opening door is locked on the secondary door. With the 928, conventional Porsche front doors are used,

but only half-size rear doors were needed. This was due to the usage of opera doors which are hinged from the rear.

The B pillar is part of the door assembly and opens with the door. As a result, there is an ample amount of headroom for entry. Furthermore, when the front bucket is tilted, rear seat entrance is facilitated. Incorporating the B pillar in the rear door helps maintain the original Porsche styling intent.

The approach concentrates on safety as well as styling with the unique interlock door system. The front door must be opened before the rear door can be unlatched as the rear door provides support for the front door. To ensure this approach, the inside rear door handle is inoperative. When the front door is opened, the